



The caRoI™ Duratech 150 manual winch is designed to be installed in permanent installation (ex: wall mounting) or for temporary tasks, attached to Tracpode Pro* anchor point using its bracket. The caRoI™ Duratech winch is primarily used for material lifting in various industrial environments. The device is designed to be used in situations where the winch body is exposed to mildly corrosive environments, and where the wire rope may be in the contact with aggressive or corrosive substances.

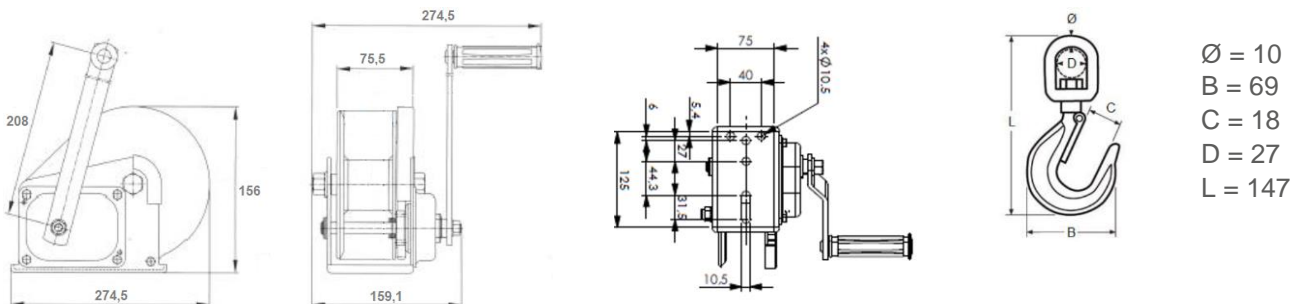
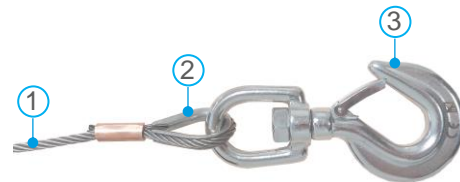
* Information about the Tracpode Pro anchor point and his associated bracket can be obtained upon request to Tractel or at www.tractel.com.

APPLICATIONS

- Chemical industry
- Sewage treatment plant
- Confined space
- Urban wastewater network
- Others

TECHNICAL CHARACTERISTICS

- Compact, lightweight, and robust device
- W.L.L.**: 150 kg
- Lifting height : 12 m
- Painted steel sheet frame and painted drum
- Stainless steel components:
 - 1- Lifting wire rope (AISI 304)
 - 2- Thimble (AISI 316)
 - 3- Swivel hook with safety latch (AISI 304)
- Safety ratchet brake
- Use and mechanical parts protection through a protective cover
- Possibility to remove the crank to disable its use.
- Designed and built to withstand dynamic test at 1.1 x W.L.L.** , static test at 1.5 x W.L.L.** and to guarantee minimum mechanical resistance of 4 x W.L.L.**
- Equipped with a QR code enabling product traceability monitoring



The dimensions are expressed in mm

W.L.L.**(kg)	150
Lifting height (m)	12
Wire rope diameter (mm)	Ø 4.7
Lifting distance per crank turn (mm)	90
Force on crank (daN) ⁽¹⁾	17

** : W.L.L. = Working Load Limit

⁽¹⁾: At last winding layer



APPLICABLES STANDARDS

- European directive 2006/42/EC
 - UKCA Regulation
- Complies with all relevant provisions of the 2008 Supply of Machinery (Safety) Regulations (SI 2008/1597) as amended (SI 2011/1042, SI 2011/2157, SI 2019/696)

PRODUCT CODE AND LOGISTIC INFORMATION

Code	Description	Code EAN	Net weight equipped (kg)	Weight (incl. packaging) (kg)	Packaging dimensions (mm)
218498	caRoI™ Duratech 150	3600232184980	5.3	5.8	160x160x220